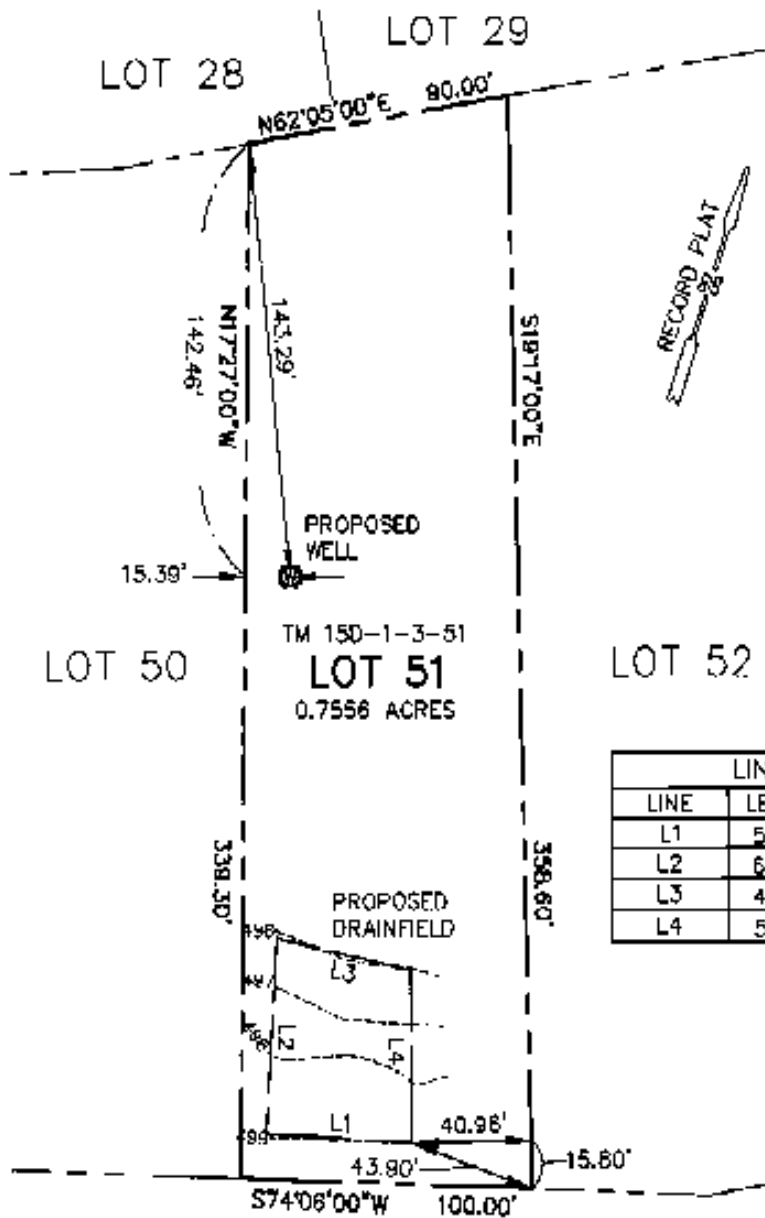


NOTES:

- 1) VERTICAL DATUM IS ASSUMED.
- 2) NO TITLE REPORT FURNISHED. EASEMENTS AND/OR OTHER ENCUMBRANCES OF RECORD MAY EXIST WHICH ARE NOT SHOWN HEREON.



LINE TABLE		
LINE	LENGTH	BEARING
L1	50.00'	S75°41'46"W
L2	64.00'	N14°37'58"W
L3	47.02'	N84°54'10"E
L4	58.61'	S18°18'25"E

PLAT SHOWING  
**PROPOSED DRAINFIELD  
 & PROPOSED WELL**  
 ON  
**LOT 51**  
 RIVERVIEW SECTION  
 PART II  
 SHENANDOAH FARMS

SHENANDOAH MAGISTERIAL DISTRICT  
 WARREN COUNTY, VIRGINIA

SCALE: 1" = 50' DATE: MAY 23, 2008



**MONTGOMERY**  
*Engineering Group, Inc.*

160-B Prosperity Dr. (540) 450-0206 VOICE  
 Winchester, VA 22603 (640) 400-3115 FAX  
 www.montgo.com