

**Wendy Hill Hideaway**

This glass-filled prow gable design is almost as spectacular as the panoramic view from inside.

1711 sq ft

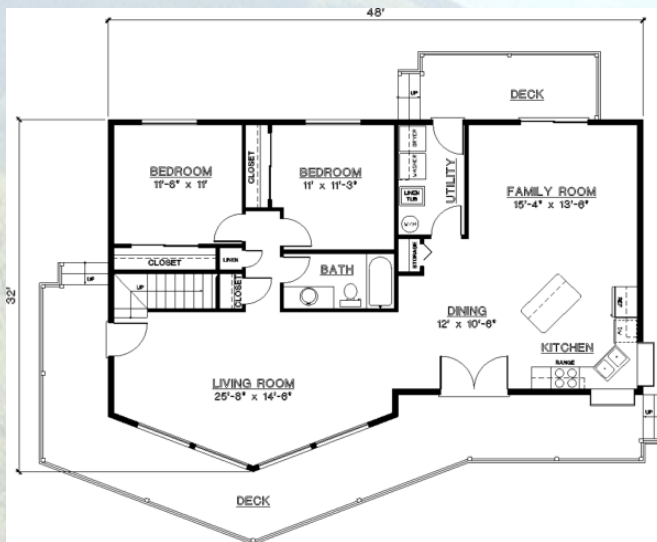
Three bedrooms, two baths

Choice of hardieboard or cedar siding

Hardwood floors

Fireplace

Full, unfinished basement



Sales Information:

Vicky Chrisner

703-669-3142

www.LVC-Homes.com



*\*Contact us for a specific proposal to have this home built on your lot.. Prices quoted will include standard costs for grading, well & septic install, gravel driveway. These lot-related costs do vary.*